

APPENDIX E – SOCIOECONOMIC STUDY

Barren County KY 90 Planning Study

Socioeconomic Study

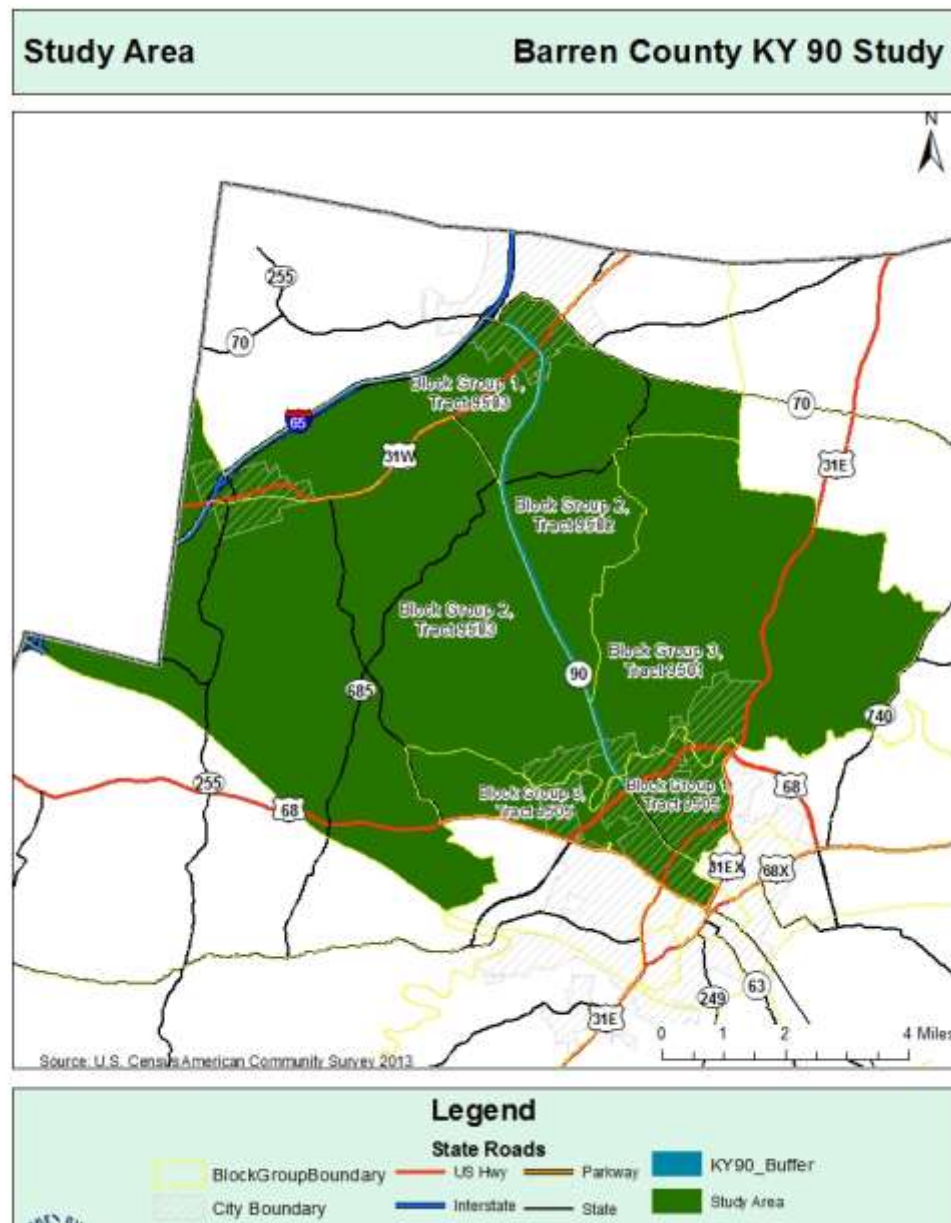
Brittany L. Fisher, AICP

2/1/2016



Methodology

The Barren County KY 90 planning study area is a corridor along KY 90 and does not conform fully to specific Census Block Groups. However, all of the Census Tract Block Groups that are adjacent to the study area corridor were used to ensure the study area and affected population centers were included in the socioeconomic study. KY 90 connects the cities of Glasgow and Cave City. The area includes Block Groups 3 of Census Tract 9501; Block Group 2, Census Tract 9502; Block Groups 1 and 2, Census Tract 9503 and Block Groups 1 and 3, Census Tract 9505 all within Barren County.



Map 1: Study Area Block Group Census Tracts

The American Community Survey 2013 was used to calculate block group level population percentage age 65 and older; minority population percentage; percentage of limited English proficiency (using speaks English Very Well as the threshold for proficiency); percentage below the poverty line; and median income. The Kentucky and Barren County block group averages were then determined for each socioeconomic factor. The following analysis compares the state and county averages for each socioeconomic factor with the study area block groups.

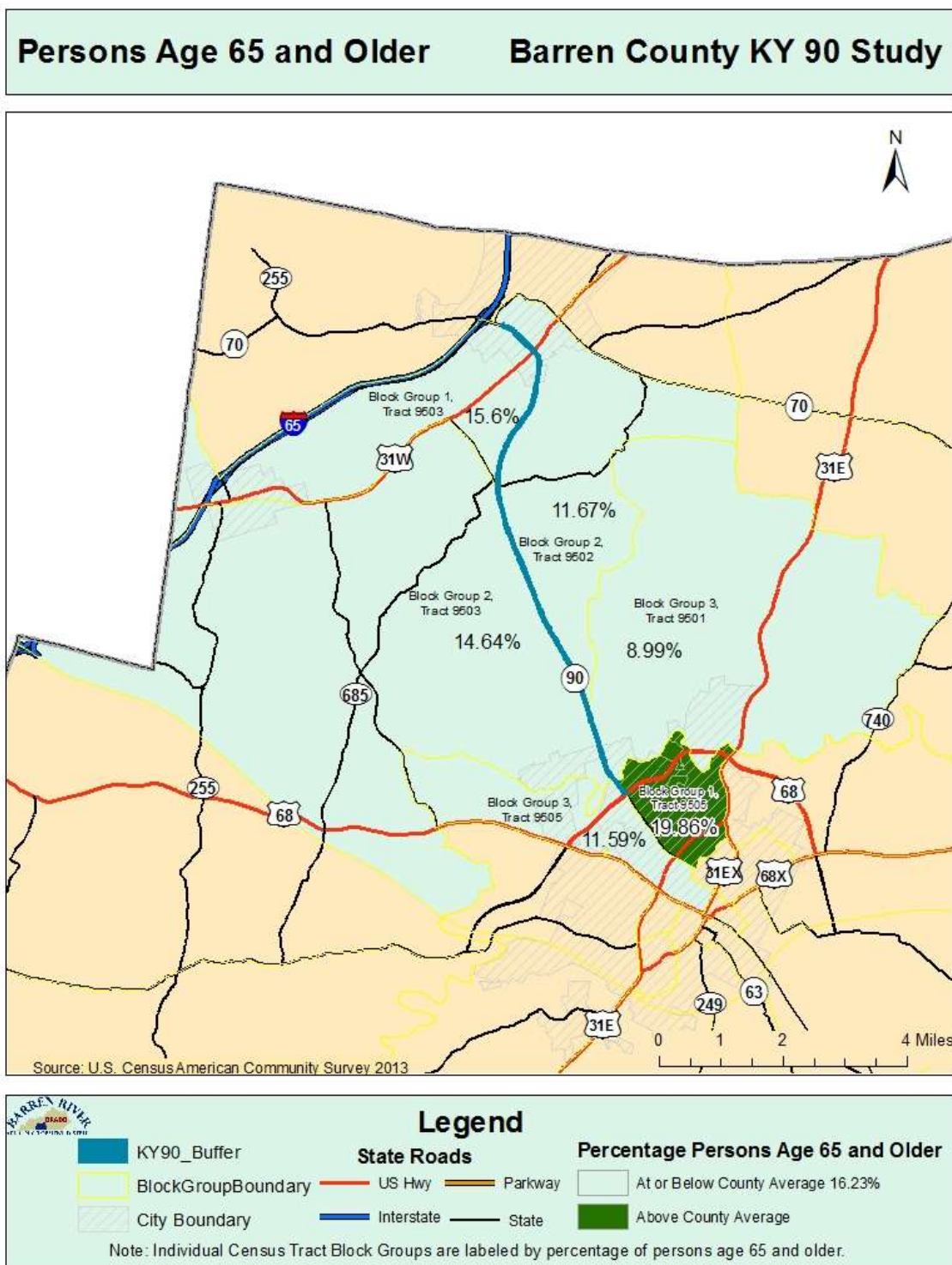
After analysis was complete, the 2014 American Community Survey was received. The data had differences, however they were of little significance to the public involvement plan for the study area.

The methodologies used in this planning document are appropriate for identifying possible areas of concern in small urban areas and potential project corridors. However, during future phases of project development a more detailed and robust analysis would be required for the NEPA documentation when assessing the potential for adverse and disproportionate impacts to low-income and minority populations.

Analysis

Persons Age 65 and Older

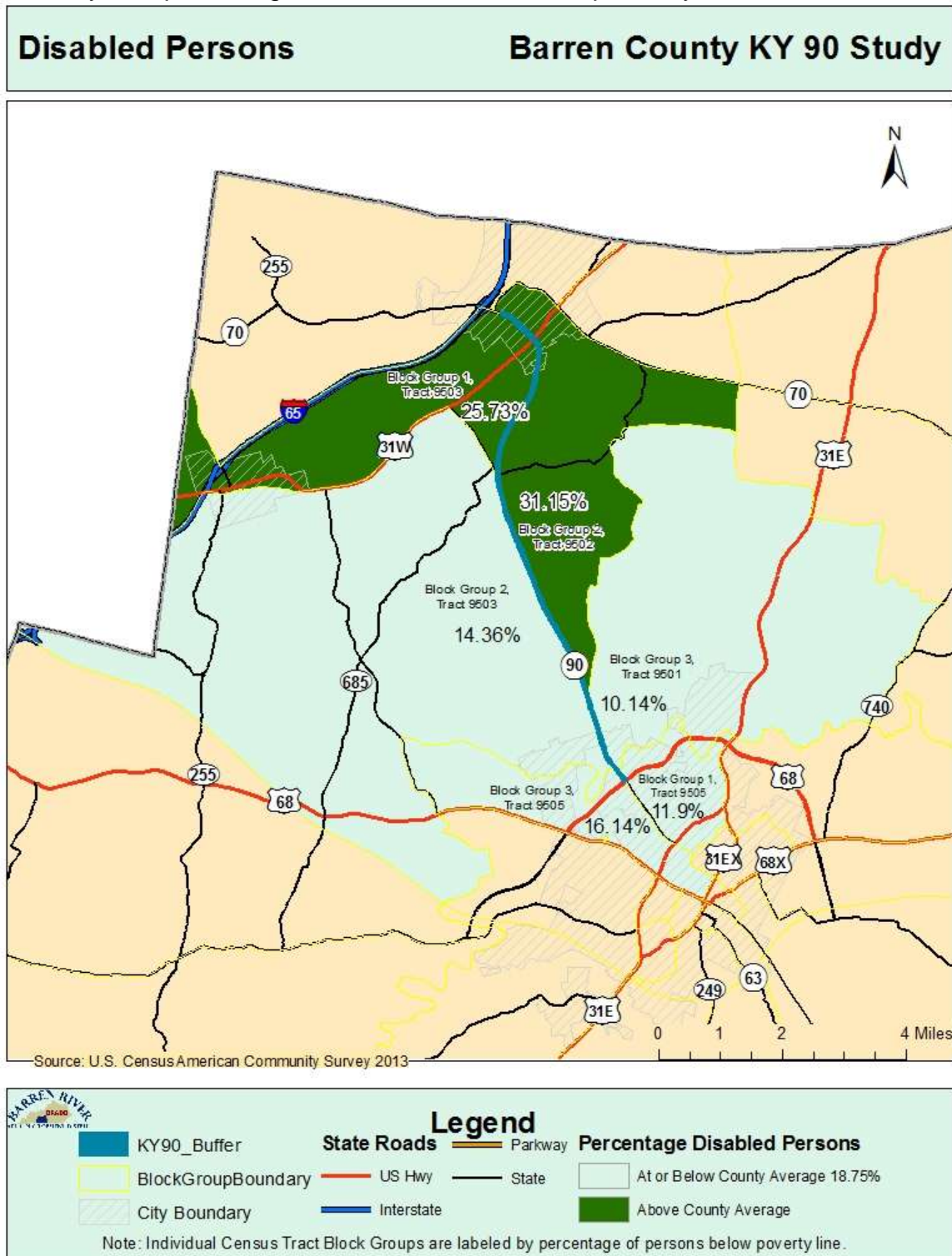
The state average population over age 65 is 14.57%. The Barren Co. population over age 65 is 16.23%. Block Group 1, Tract 9505 (19.86%) have populations above the state and county averages of percentage population age 65 and older. Block Groups 1 and 2, Tract 9503 are each above the state average population over age 65 with 15.6% and 14.64%, respectively.



Map 2: Percentage persons age 65 and over

Disabled Persons

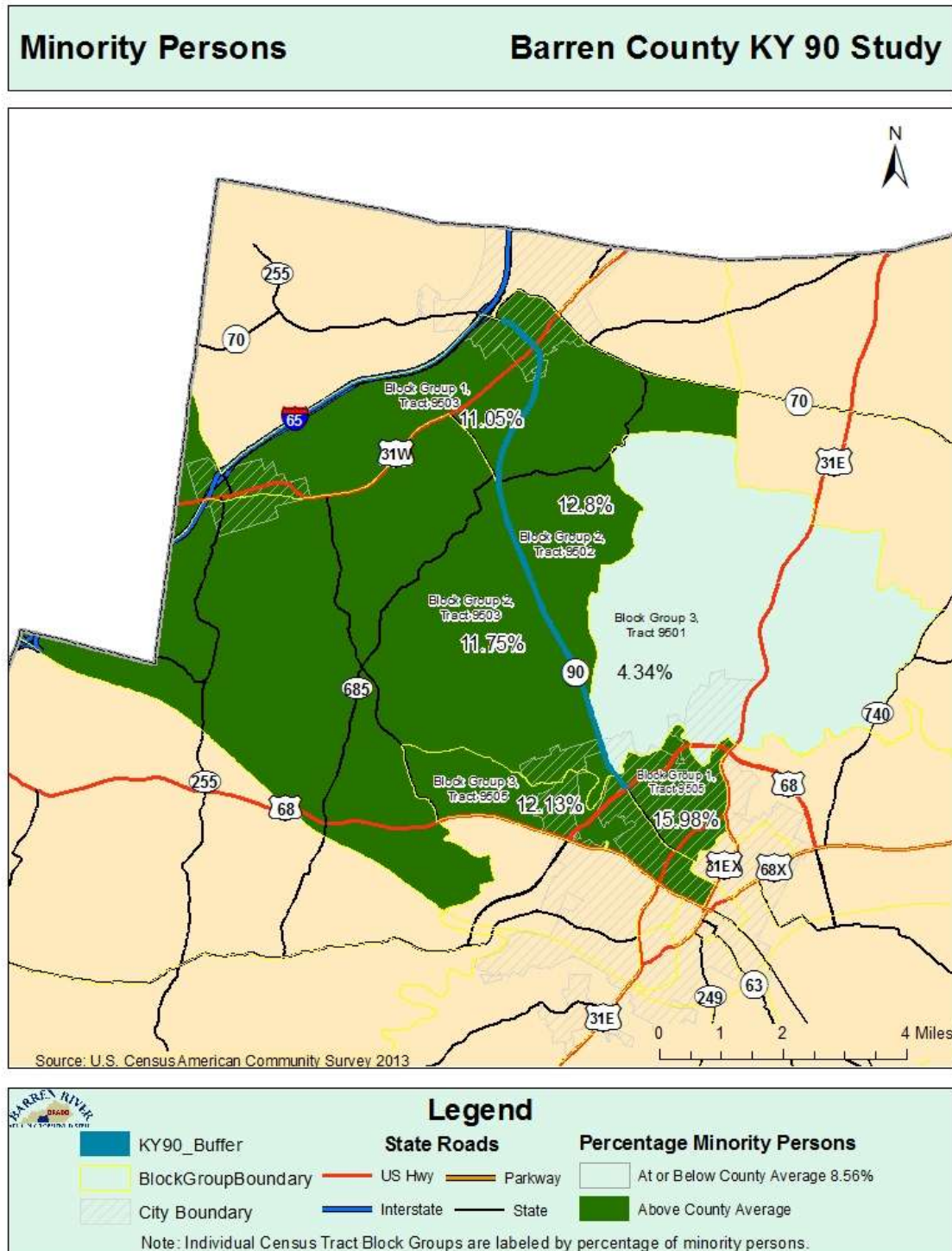
The Kentucky average percentage of disabled persons is 16.45%. Barren County has a higher percentage of disabled persons with an average of 18.75%. Block Group 2, Tract 9502 and Block Group 1, Tract 9503 have more disabled persons than the state and county with percentages of 31.15 and 25.73, respectively.



Map 3: Percentage of disabled persons

Minority Persons

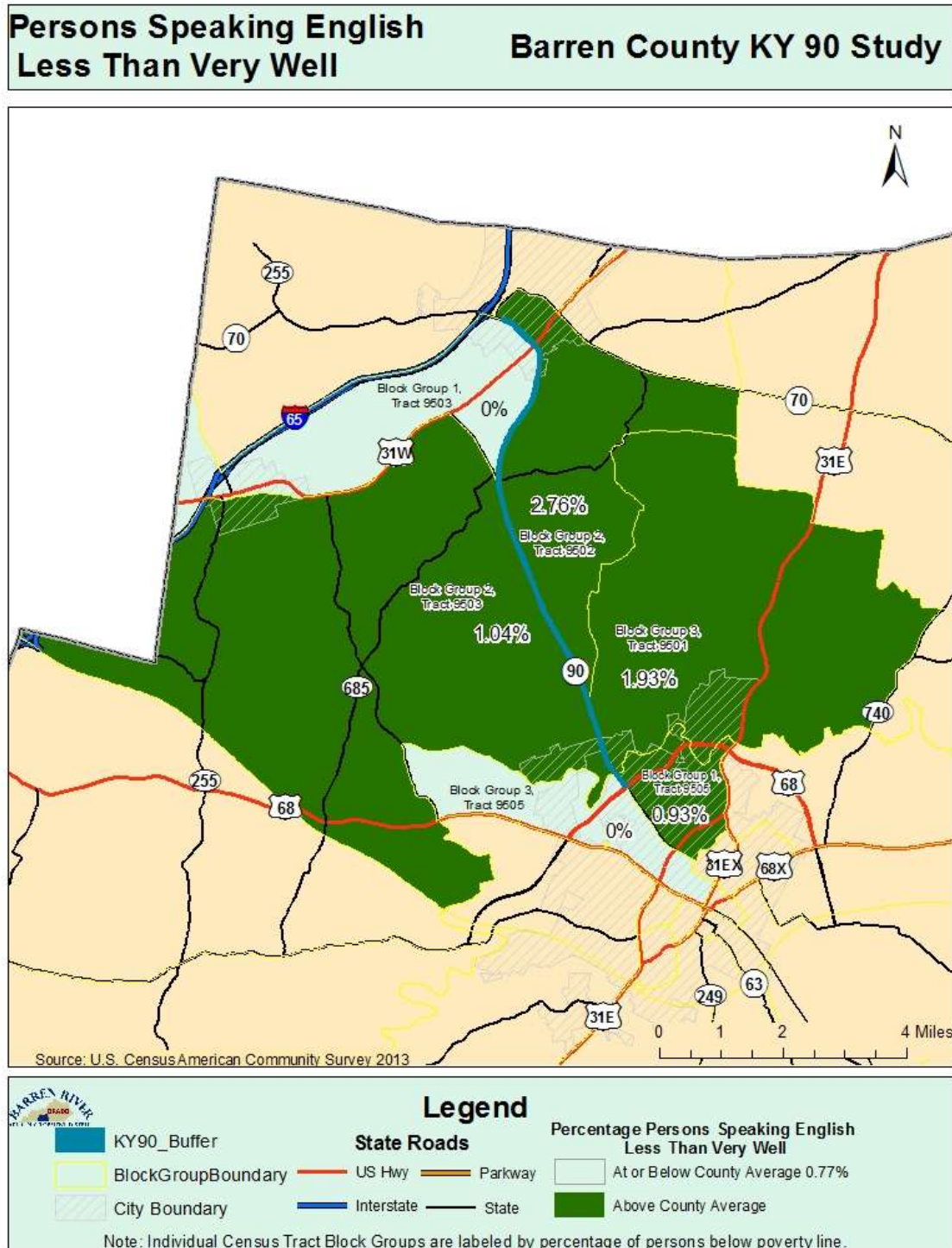
Block Group 2, Tract 9502; Block Groups 1 and 2, Tract 9503 and Block Group 3, Tract 9505 fall between the Kentucky and Barren County averages for minority population percentage. Block Group 1, Tract 9505 has a minority percentage of 15.98% exceeding the State and Barren County averages. The Kentucky average is 13.98%, whereas Barren County has a lower average with 8.56% minority persons.



Map 4: Percentage minority persons

Limited English Proficiency

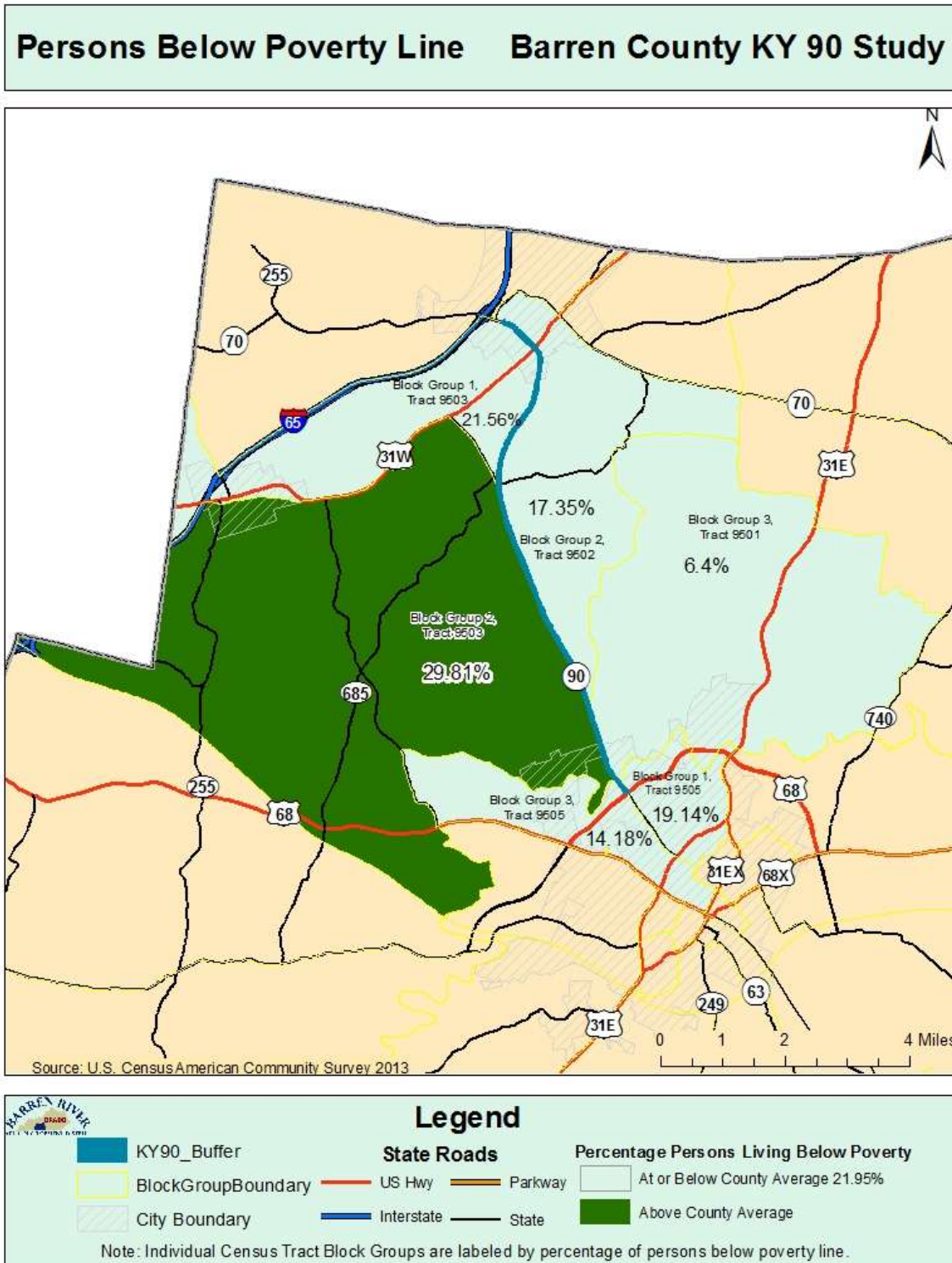
Limited English proficiency in the state averages 1.93%, while Barren County has a lower average with 0.77%. Block Group 2, Tract 9503 (1.04%) and Block Group 1, Tract 9505 (0.93%) fall between the state and county averages. Block Group 2, Tract 9502 surpasses both the Kentucky and Barren County averages. Block Group 3, Tract 9503 aligns with the state average of limited English proficiency.



Map 5: Percentage persons speaking English less than very well

Income Level

Income level is also useful for socioeconomic concerns. In the study area, Block Group 1, Tract 9503 has a lower percentage of persons below the poverty level than the county with 21.56%, but a higher average than the state. Kentucky has an average of 20.11% of persons falling below poverty level. Barren County has an average of 21.95% of persons below the poverty level. Block Group 2, Tract 9503 has a higher percentage of persons below the poverty level than the state and county with 29.81%.



Map 6: Percentage persons below the poverty line

Applicable Laws, Acts and Executive Orders

Civil Rights Act of 1964, Title VI (42 USC 2000d et seq.) -This title declares it to be the policy of the United States that discrimination on the grounds of race, color, or national origin shall not occur in connection with programs and activities receiving federal financial assistance, and authorizes and directs the appropriate federal departments and agencies to take action to carry out this policy. The Presidential Memorandum accompanying Executive Order 12898 states that in accordance with this title, each federal agency should ensure that all programs or activities receiving federal financial assistance that affect human health or the environment do not directly, or through contractual or other arrangements, use criteria, methods, or practices that discriminate on the basis of race, color, or national origin.

Age Discrimination Act of 1975 - 42 U.S.C. 6101, provides: No person in the United States shall, on the basis of age, be excluded from participation in, be denied the benefits of, or be subjected to discrimination under any program or activity receiving Federal financial assistance.

Rehabilitation Act of 1973, Section 504 - 42 U.S.C. 794, et seq., provides: No qualified handicapped person shall, solely by reason of his handicap, be excluded from participation in, be denied the benefits of, be subjected to discrimination under any program or activity that receives or benefits from Federal financial assistance.

Americans With Disabilities Act of 1990 - 42 U.S.C. 12131, et seq., provides: No qualified individual with a disability shall, by reason of such disability, be excluded from the participation in, be denied the benefits of, or be subjected to discrimination by a department, agency, special purpose district, or other instrumentality of a State or local government.

Executive Order #12898 - (Environmental Justice) directs federal agencies to develop strategies to address disproportionately high and adverse human health or environmental effects of their programs on minority and low-income populations.

Executive Order #13166 - (Limited-English-Proficiency) directs federal agencies to evaluate services provided and implement a system that ensures that Limited English Proficiency persons are able to meaningfully access the services provided consistent with and without unduly burdening the fundamental mission of each federal agency.